



# Communities Creating Jobs

## ***Autumn Newsletter 2019 ~Issue 26***

A NEW POLICY FOR A NEW ERA. Michael Ring TD, Minister for Rural and Community Development launched the National Social Enterprise Policy for Ireland at Speedpak Group, Dublin on the 18<sup>th</sup> July 2019.



*“This is the first Government Policy for Social Enterprise in the history of the State, and so it’s a defining moment for all who are working for a better Ireland through social enterprise” ~Michael Ring TD. See [page 3 for more information](#).*



## Contents

Editorial.....	2
Keynote Address by Minister Michael Ring T.D. at the Launch of the National Social Enterprise Policy for Ireland. ....	3
National Social Enterprise Policy Definition 2019 .....	3
Launch of the Waterford Social Enterprise Research Report.....	3
Triest Press Roscommon.....	4
“The Columban Way” – An Irish Style Camino helping regenerate a rural community .....	6
CoderDojo Tramore .....	8
Exciting research project at LIT proposed by Dr. Shane O’Sullivan .....	9
Correspondence on EU Engagement .....	10
EQUAL Ireland Provide Outstanding Opportunities .....	11
Congratulations to John Kearney, Chief Executive of Irish Community Rapid Response (ICRR).....	13
Launch of Rural Conversations Report in the Royal Irish Academy.....	13
The Powers Gather In Waterford and Dunhill .....	14
Copper Coast Geopark Audit, Dunhill Co. Waterford.....	16
Upcoming Awards.....	16

## Editorial

The launch of the new social enterprise policy in Speedpak Ltd, Clonshaugh Business & Technology Park, Coolock, on Thursday 18<sup>th</sup> July was a great success. The packed room exuded an air of genuine celebration with Minister Michael Ring TD and Department officials making powerfully positive presentations about future development. The real work now begins. A Social Enterprise Development Unit (SEDU) representative of the sector will work with Department Social Enterprise Unit (DSEU) on the implementation of the policy in the period of 2019-2020. Communities Creating Jobs have significant experience of working with project leaders and teams on the ground since its foundation in November 2011. We intend on putting forward many proposals for the implementation to consider. The following are our first 10 proposals.

- (1) Develop promotional materials on policy and circulate through all state networks to current social enterprises for display on office, club and workshop walls.
- (2) Establish department website and quarterly newsletter to host and communicate relevant information to social enterprise project leaders/managers and teams.
- (3) Provide social enterprises with list of supports and explanations on whole of government funding, education and employment schemes and programmes.
- (4) Complete a county mapping project and form a national register of social enterprises.
- (5) Complete research on resources, live and dormant, barriers and opportunities in order to empower a new era of innovation and creativity in the sector.
- (6) Encourage formation of county and regional social enterprise networks to engage with department on needs and opportunities.
- (7) Run pilot programmes in selected areas e.g., public procurement, job creation, education and training.
- (8) Make current support programmes more relevant to social enterprise following review
- (9) Produce new year end accounting template for social enterprise start-ups, small /medium enterprises that are more manageable and cost effective
- (10) Appoint social enterprise advisors from current staff to support and instruct project leader/ managers on opportunities, resources and sustainability measures.



**Dr. Senan Cooke**  
CCJ Chairman

CCJ will put forward more proposals from our research work in future issues.



## Keynote Address by Minister Michael Ring TD at the Launch of the National Social Enterprise Policy for Ireland.



William Parnell - DRCD, Paul O'Sullivan - Clann Credo, Siobhan Cafferty - Probation Service Dept. of Justice Programme Rep, Minister Michael Ring TD, Jim Lillis - Speedpak, Andrew Forde - DRCD

**18<sup>th</sup> July - A Landmark Day for Social Enterprise, hosted by Speedpak Group Dublin.**

- **Policy development**
- **Policy consultation**
- **The Policy**
- **Policy delivery**
- **Next steps**
- **Concluding comments**

[Keynote Address by Minister Michael Ring on gov.ie](https://www.gov.ie/en/keynote-address-by-minister-michael-ring-on-social-enterprise-policy-for-ireland/)

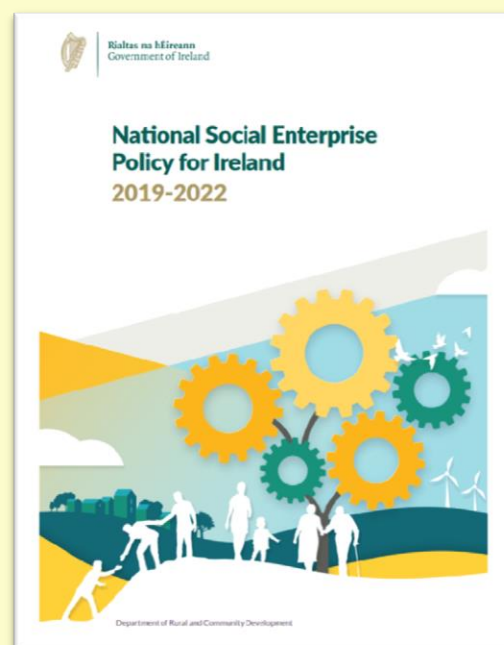
### Policy Objectives:

1. Building Awareness of Social Enterprise
2. Growing and Strengthening Social Enterprise
3. Achieving better Policy Alignment

[The National Social Enterprise Policy is available to download](#)

## National Social Enterprise Policy Definition 2019

A Social Enterprise is an enterprise whose objective is to achieve a social, societal, or environmental impact, rather than maximising profit for its owners and shareholders. It pursues its objectives by trading on an ongoing basis through the provision of goods and/or services and by reinvesting surpluses into achieving social objectives. It is governed in a fully accountable and transparent manner and is independent of the public sector. If disbanded it should transfer its assets to another organisation with a similar mission



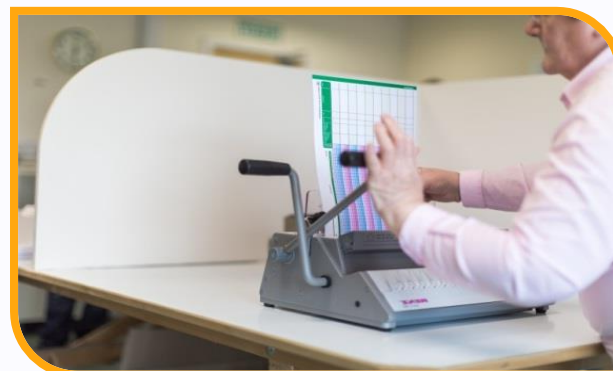
## Launch of the Waterford Social Enterprise Research Report

The Waterford Social Enterprise Research Report will be launched by Andrew Forde, principal office of DRCD at Renew Enterprises, the Lacken Road Business Park in Kilbarry, Waterford on the 4th of October at 10.30 a.m. Email:

[Irishes@wap.ie](mailto:Irishes@wap.ie), Tel. 086-7007996 for more information.



## Triest Press Roscommon



### Book Binders at work at Triest Press Printing

As Stephen Roche was powering down the Champs Elysees to become the first Irish man to win the Tour de France the print rollers were starting to turn in Triest Press in Roscommon, both significant events in 1987. Stephen went on to even further world fame and Triest Press became a very successful social enterprise specialising in print and design.

What made Triest different was clear from the outset. The company was set up by some forward-thinking folks in the Brothers of Charity Services who envisioned a workplace which would provide employment and training facilities for many of their supported friends and provide a 'quick print' service for the people and businesses of Roscommon.

Over thirty years later and that service has grown to become a leading supplier of print all over County Roscommon employing professional graphic designers and printers and providing workplaces for thirty-five service users who are all trained and skilled in the age-old hand crafts of printing finishing.

These days 'handmade' has become synonymous with quality and while some industrial printers have moved on at Triest Print, because of our very ethos, we embrace these crafts. Together with our professional printing service we provide a hand finishing service that is unique to us. Tie on labels, swing tags, sparkling diamante studs, scarlet ribbons and satin bows are all applied to printed invitations and cards with a great deal of care, attention and pride. You see, speed isn't everything at Triest Press.

Some things just take time. And at Triest we make the most of it!

Visitors always comment on the friendly and happy atmosphere on the work floor - a little song while you fold never does any harm - and the jobs keep rolling out.

Stephen Roche famously said that he wanted to leave his mark - Triest Press is no different, after thirty years we have undoubtedly left our mark on County Roscommon. From our memorial stationery range which are treasured items in houses all over the County to our wedding invitations which beckon happy days yet to come – but most importantly we have left our unique mark on the lives of our staff. They are, and always will be, our most treasured resource and our very reason for being.

At Triest Press we endeavour to continue the work that was begun thirty years ago, to enhance the lives of our supported workers while increasing and improving our product range. Like our beloved worker Ann Bernadette says – we can do it all!!





### Mission Statement

#### A Growing Part of the community

Since 1987, Triest press has grown to become a thriving social enterprise.

We supply quality printing to a wide range of businesses, community organisations and personal customers in Roscommon and surrounding areas.

Our Quality ethos ensures we adhere to the highest quality standards and believe that all of our team members can contribute in a meaningful way to the local economy

We offer a professional print service which is coupled with a policy of meaningful employment for people with an intellectual disability, we further employ a team of professional graphic designers who are supported by experienced customer service, print finishing and packing personnel.

We are a non- profit making community enterprise with a focus on growing the business to meet the needs of our customers and developing further employment opportunities for people with intellectual disability.



**Triest Press** were delighted to have been afforded the opportunity to produce the Waterford Social Enterprise Report document that will be launched on 4<sup>th</sup> October.

# “The Columban Way” – An Irish Style Camino helping regenerate a rural community

Myshall village is a community of 260 people within a larger parish of under 2000 nestled in the foothills of the **Blackstairs Mountains of East Carlow**. A local group called **Myshall Muintir Na Tire** was founded in 1948 with responsibility for village asset improvement and development projects for the benefit of the community.

Like many rural villages and towns in Ireland the community was hit hard by the recession resulting in increased unemployment, emigration, business closures and ghost estates. During hard times, rural communities often must dig deep and improvise to survive and make things better for current and future generations and sometimes a spark of an idea or a small win can help reenergise the voluntary spirit within the community.

In Myshall this occurred after a village community event in 2014 in the form of a pan European project celebrating the birth of Saint Columbanus in Myshall, Carlow some 1,400 years ago in 545 AD. An Irish Saint of significant European importance as the patron saint of a united Europe, founder of the Columban order as well as over 100 monasteries across Europe.

Involvement with the Saint Columbanus celebration project introduced our organisation to members of the Columban Order and Friends of Columbanus organisations across Europe, who were interested in developing new and connecting existing sections of walking routes along the journey of Saint Columbanus.



This journey went from Myshall to Bangor, Co. Down where Saint Columbanus was trained and onward to mainland European countries of France, Germany, Switzerland, Austria before settling in Bobbio, Italy where he resided and was buried in 615AD.

What started as a spark of an idea to develop a walking trail to help regenerate our rural community has grown into participation of a European and National Organisation with the goal of developing a walking trail to rival the Camino de Santiago.

The ‘Columban Way’ route will comprise 3000km with over 350km on the island of Ireland commencing at the Nine Stones viewing point at Mount Leinster, Myshall, Carlow and travelling through Carlow, Laois, Kildare, Meath, Fermanagh to Bangor in County Down. Sections of the route are well established on mainland Europe and in Fermanagh and with the addition of the southern Irish section the route it will complete the journey and provide a strategic and appropriate starting point in Carlow.

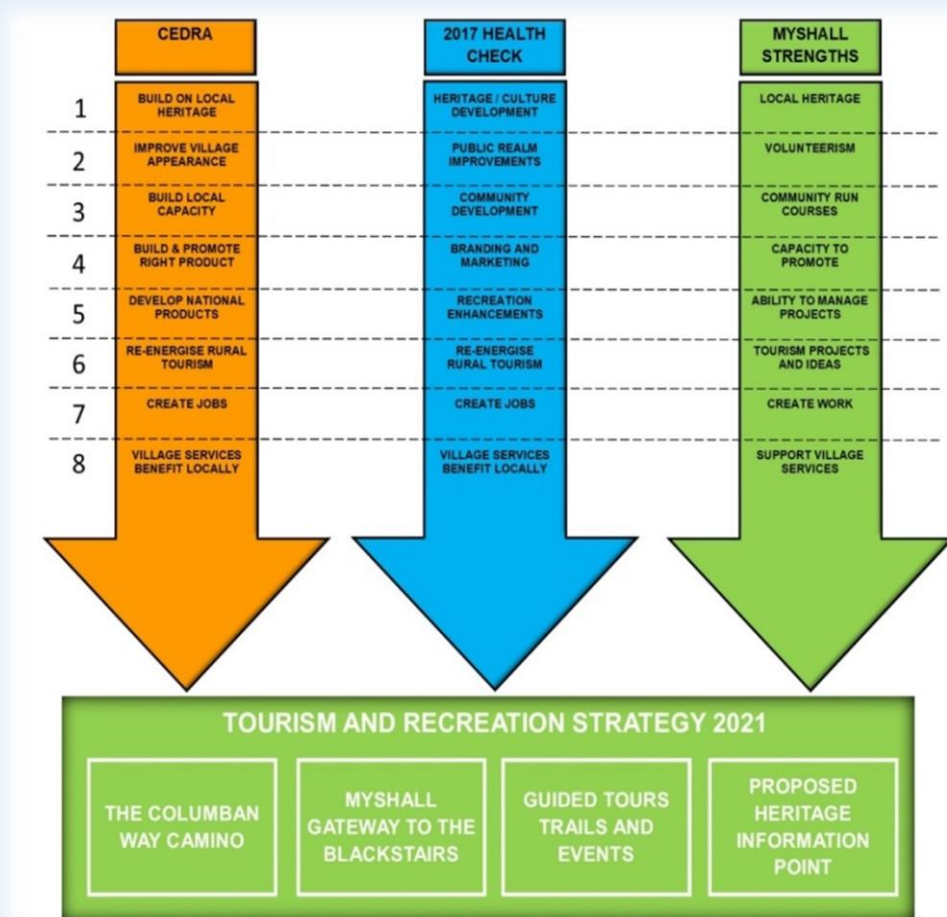
Local authorities, tourism agencies, Columbans and especially the voluntary community sector are key stakeholders in its success to date and the Carlow section will to be waymarked and operational by the end of 2020. The priority in developing the route is to encourage participation of local communities to help contribute to its success as well as benefiting from the economic and cultural advantages brought by visitors to rural communities along the route.



'The Columban Way' is an anchor project within Myshall's Tourism and Recreation Strategy 2021 and has informed their community grant applications resulting in successful Town and Village applications for the last three years totalling in excess of €200,000 for community 'Columban Way' related components, in addition to funding of €144,000 secured from The Rural Regeneration fund by Carlow County Council.

In addition, a feasibility study is underway for the establishment of a heritage and information centre in the village to inform, guide and share the rich natural, historic and cultural attractions of the Blackstairs Mountains. To grow the project and provide the basis of a social enterprise the community of Myshall has utilised the Carlow section of the Columban Way route to establish an annual two-day weekend walking event 45km long. Thus, introducing walkers to the area and helping contribute to the community by staying and spending in local businesses whilst providing valuable feedback to help make the Columban Way an enjoyable experience.

At community level in Myshall there are over twenty-five community volunteers involved in a variety of roles from national, regional and county representation as well as project development and key support roles. In 2019 & 2020 as part of their Town and Village Scheme over twenty community members attended and qualified in Tourism Care and Practice Modules to learn, prepare and plan for 'The Columban Way' project.



The group's tourism training has highlighted the importance of considered tourism development and achieving a balance between locals and visitors needs in terms of benefits and impacts on the community. We believe the project adopts a low impact slow tourism model with minimal impact on the rich Biodiversity of the area and provides opportunity to create a cultural rural community corridor showcasing the rich heritage, natural environment and culture of communities along the 'Columban Way' providing opportunity for rural communities to become more sustainable.

Their inclusion as a finalist in the 2019 Bank of Ireland National Enterprise Town Awards

resulted in the community achieving the 'Best National Town Initiative' at the awards night in Kilkenny which contributed another small win along with €5000 to encourage and inspire our small community group to keep going forward.

They believe rural communities should work together and share knowledge wherever possible so if any community groups or organisations have any questions or need assistance, please do not hesitate to contact us via our email address [columbanwaymyshall@gmail.com](mailto:columbanwaymyshall@gmail.com)



## CoderDojo Tramore



*CoderDojo Tramore's 5th birthday, with special guests Grace O'Sullivan MEP and Jordan Casey*

CoderDojo is a global movement of free, volunteer-led, community-based computer programming clubs for young people, which started in Ireland. There are many benefits of getting involved in CoderDojo whether it's attending, volunteering or through sponsorship.

Coding is the process of using programming languages to create games, websites and applications. CoderDojo's focus is on coding but it also facilitates projects that include engineering, graphic design, 3D design and robotics, basically anything related to technology. A Dojo is a place where people meet to learn from each other. CoderDojo's encourage creativity in a relaxed, fun and social manner and involves collaboration with its global network.

At a CoderDojo Tramore, boys and girls aged between 7 and 17 years attend weekly, they can bring their own laptop, use some that have been donated, or buddy up and take turns either reading directions or coding. Kids learn important IT skills that will be in high demand for future jobs. Coding builds confidence as kids present their work, developing communication and networking skills. Coders love the relaxed, fun atmosphere; they set their own goals and work on overcoming the challenges involved in solving problems.

### Volunteers Opinions

"It's an opportunity to gain experience while being part of a highly skilled community group with altruistic intentions"

"I'm able to see huge progress in kids coding & IT skills in completely relaxed and stress-free atmosphere is very inspiring for me. They've gone a long way in less than a year, not bound by any tests or deadlines and having great fun as well"

"Being more closely involved in my kids' extracurricular activities. Working with likeminded volunteers who are interested in the future of the kids"





CoderDojo Tramore frequently goes on site visits to see 'tech industry in action' and have received amazing Special Guests to inspire the kids through workshop and discussion. Always looking to ensure the fun factor, many events and milestones are celebrated throughout the year.

CoderDojo is funded through parents' donations and corporate social responsibility sponsors. Sponsoring CoderDojo helps to ensure that it will always be free regardless of a family's financial circumstances.

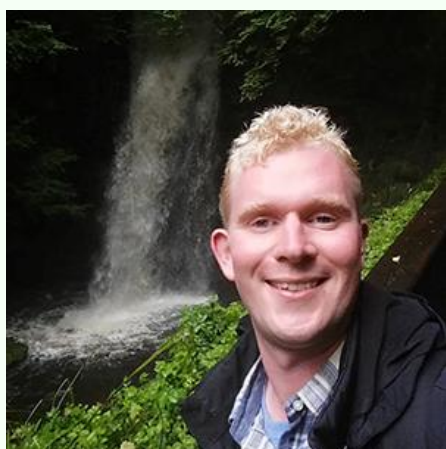


For information on attending, volunteering or sponsoring CoderDojo Tramore email: [tramore@coderdojo.com](mailto:tramore@coderdojo.com)

Also find us on Facebook, Twitter or LinkedIn! For any other queries check out the global website [coderdojo.com](http://coderdojo.com)

---

## Exciting research project at LIT proposed by Dr. Shane O'Sullivan



Limerick Institute of Technology has been an active partner of CCJ almost since the foundation of the organisation. Its Development Manager (now retired) acted and continues to act as the Company Secretary; many of the meetings of the Board are hosted on the LIT Thurles Campus; and LIT has acted as the academic partner in the Tipperary, Clare and Limerick areas and was core to the development of the CCJ Community Asset Audit Tool.

This connection between LIT and CCJ has now passed on to the next generation of LIT academics. [Dr Shane O'Sullivan](#), who is a lecturer in the Department of Applied Social Studies and formerly a Project Officer in the Institute's Development Unit, has become deeply engaged in the topic of social enterprise.

This interest links well with his background in rural restructuring and development, migration, spatial analysis, policy formulation, and economic geography. Shane worked on several EU-funded social enterprise projects during his time in the Development Unit and has now brought this interest into the research areas of LIT.

Dr. O'Sullivan submitted a research proposal to the LIT Funded Research Masters/PhD Programmes for funding for an MA in Research on An Assessment of the CCJ Model and this proposal has been accepted. This is an exciting development for CCJ. To date there has been no evaluation of the model developed by CCJ and it will be very heartening to have a researcher from LIT working on this project under Dr. O'Sullivan's supervision.

This research project seeks to ascertain and critically discuss the socio-economic impacts associated with this employment creation model within selected rural communities / market towns. Furthermore, it will seek to determine the ways in which this model is aligned to other approaches - community-led local development; social economy/enterprise; integrated area planning, asset-based community development etc. A case study approach is planned in order to address the research questions. Semi-structured interviews, participant observation and focus groups with key stakeholders will be the preferred methodological tools for the collection of primary data. This research will be completed under the supervision of LIT and facilitated by the voluntary members / board of CCJ. The evidence-based findings from the research will be disseminated to policymakers, with the aim of highlighting the strengths and challenges of initiating a community led employment generation model.

Watch this space!!

For further information see [LIT.ie](http://LIT.ie)



## Correspondence on EU Engagement

### ***Europe is listening! Brussels is talking about us!***

Requests for information and survey completions can be a nuisance, feedback is rare. Getting an email of appreciation is welcomed by Dunhill Rural Enterprises. I'd like to extend that appreciation noted below to all who participated in [EU official visit to Dunhill](#) last May.

The following is the response from a fellow member of the SETF John Kearns, after we completed a template for collecting information on social economy clusters in relation to Dunhill, which was then included in the overall compilation for the Commissions Expert Group on the social business initiative (GECES).

### **Excerpt from John's email below:**

***"Thanks to your contribution, they had an in-depth discussion on the **Dunhill Community Enterprises CLG model**. There was overall positive response to the work being done in Waterford and indeed some of the staff had commented on the fact that Dunhill had been the location for a recent visit from another EU official. **That must have gone well because they were all familiar with it in Brussels!**"*** [John Kearns](#), Chief Executive of Partas member of [SETF](#) and [GECES](#).

**From:** John Kearns [mailto:[jkearns@partas.ie](mailto:jkearns@partas.ie)]  
**Sent:** Friday 19 July 2019 15:58  
**To:** Senan Cooke  
**Subject:** Social Enterprise Cluster - Dunhill

Dear Senan,

As you know, I sit as an Irish representative on the expert advisory group to the EU Commission on social enterprise – fondly known as the GECES group. I am also part of a working group on examining the potential role that clustering might have to play in the further development of social enterprise in the EU. I would therefore like to thank you for your contribution to the expert group at the EU Commission, who are in that process of examining existing social enterprise clusters around Europe. Thanks to your contribution, they had an in-depth discussion on the Dunhill Community Enterprises CLG model. There was overall positive response to the work being done in Waterford and indeed some of the staff had commented on the fact that Dunhill had been the location for a recent visit from another EU official. That must have gone well because they were all familiar with it in Brussels!

Based on the ongoing research, the Commission hopes to encourage further development of social enterprise clusters around Europe and Dunhill is now in the mix as one best practice example. I will keep you briefed on the research as it continues but in the meanwhile please again accept my appreciation of the work and effort you put into reporting on the Dunhill example in the format that had been requested. Continued success to all in the South-East on their great work for social enterprise!

Kindest regards,  
John

---

John Kearns  
Chief Executive  
Partas  
Tallaght Enterprise Centre  
Main Road  
Tallaght  
Dublin 24

## EQUAL Ireland Provide Outstanding Opportunities

EQUAL Ireland, a social enterprise which offers part-time blended learning third level education opportunities to mature participants is gearing up for a busy autumn. Programmes will be commencing in Dundalk Co Louth, Dunmanway Co. Cork, Littleton, Co Tipperary, Galway, Longford and Waterford. In November over 100 programme participants from Galway, Kilkenny, Tipperary and Tuam will graduate from Athlone Institute of Technology with Higher Certificate, BA in Business, Enterprise and Community Development or BA (Hons) in Social Enterprise, Leadership and Management awards.

To date EQUAL Ireland has delivered programmes in over 20 centres across the country. Our success is due to committed local community involvement which is invaluable in terms of funding, recruitment and community facilities. A community ethos is obvious through programme content and through fostering a community of learners in each class. Community capacity building and rural regeneration particularly in the related areas of Community Development and Social Enterprise is a priority of EQUAL Ireland.



Tuam BA in Business Enterprise & Community Development Graduating Class

Participants come from a variety of backgrounds and experiences. Many are involved in community life and local leadership roles. To date ten participants have served or are serving on county councils. Women working in the home and looking to return to the paid workplace are heavily represented as are the new Irish and other minorities. A sense of adventure, a hard-working ethos and ambition for self and community are common traits.

The focus of all programmes is on Community Development and Social Enterprise. We offer a full Honours Degree programme with three separate exit awards accredited by Athlone Institute of Technology.

**Higher Certificate** in Business, Enterprise and Community Development (after 2 years)



**BA** in Business, Enterprise and Community Development (after 3 years)



**BA (Hons)** in Social Enterprise, Leadership and Management (after 4 years)

This structure is flexible and offers great choice to participants. Each stand-alone programme can be completed in isolation or as part of the full Honours degree suite. This allows for a one to four-year commitment which can be staggered over several years to suit circumstances.





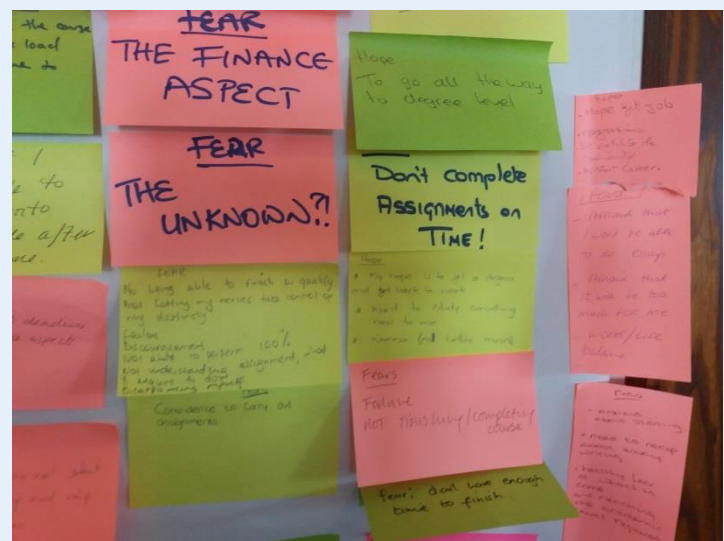
Tuam Higher Certificate Workshop

Recognition of Prior Learning features very prominently in EQUAL Ireland programme recruitment. The Prior learning of people acquired through previous studies, in the workplace or through voluntary and community engagement can lead to advanced entry to EQUAL Ireland programmes.

Fees for EQUAL Ireland programmes are modestly priced in line with our charitable status. All programme fees are payable over a staggered payment schedule. In many cases partial or full course funding is provided through different government and EU funding grants.

Programmes are delivered using blended learning. This means attendance at one day workshops (approximately twice a month usually on Saturdays) and online study. There are 10 modules in the Higher Certificate programme and 6 in each degree year programme.

Modules are assessed through applied project work spread throughout the year. Participants are encouraged to focus on organisations or topics of particular relevance to themselves. For example, Community Development assignments, examines local communities and Social Enterprise and Business Development assignments look to help develop and sustain existing local organisations.



Further information can be found at [www.equalireland.ie](http://www.equalireland.ie) or by calling 091 778682.



Hildegard Naughton TD with Galway Higher Certificate Class



## Congratulations to John Kearney, Chief Executive of Irish Community Rapid Response (ICRR)



On 2<sup>nd</sup> September, An Tánaiste Simon Coveney TD launched Ireland's first Charity Air Ambulance service in Millstreet Co. Cork. [Irish Community Rapid Response](#) has set up this outstanding service and the launch was organised to promote a major fundraising drive. Ireland's first Charity led Air Ambulance has delivered 56 missions in its first month of service. ICRR is a social enterprise located in Skibbereen Co. Cork and John Kearney is a founding member and director of Communities Creating Jobs.

## Launch of Rural Conversations Report in the Royal Irish Academy

On Wednesday 4<sup>th</sup> September the Royal Irish Academy [Rural Conversations Report](#) was launched by Minister Michael Ring TD in the Royal Irish Academy in Dawson Street Dublin.

Three stakeholder Consultative Events were held in late 2018 and February 2019 in collaboration with the Department of Rural and Community Development. These were

- University College Galway on Economic Development
- Dundalk Institute of Technology on Social Cohesion
- Waterford Institute of Technology – Vibrant and Sustainable Communities

The themes discussed were economic development, social cohesion, and sustainable rural communities. The challenges and opportunities facing rural Ireland were also outlined.

One of the findings included the changing nature of work offering remote employment opportunities and outlining that access to specialist skills could be enhanced through an embedded use of co-working spaces. It also highlighted that the value of such initiatives is dependent on secure, robust online access to 'Smart Working' locations.

Audio and report available on [RIA website](#)



L-R Prof. Aine Boland, Dr. Leana Reinl, Minister Michael Ring TD, Prof. Patrick Shannon Dr. Felicity Kelleher



L-R Prof. Patrick Shannon Minister Michael Ring TD, Prof. Aine Boland and Dr. Felicity Kelleher





## The Powers Gather In Waterford and Dunhill

In the pages of some national newspapers, recently, there has been a divisive debate raging as to the relevancy of history as a subject in our schools. It went from the frivolous to the serious with one wag writing, *‘I’m glad I studied history when there was much less of it’*. President Michael D. Higgins said that *“history is the inheritance of all our people”*, and that he had a *“deep and profound concern”* that history might no longer be a core subject in our schools and universities. However, any lingering questions on the importance of history were answered at the **Power Clan Gathering** from August 9-13<sup>th</sup> in Waterford.



Dunhill Castle is the well-known ancestral home of the Powers since the Norman invasion of the Twelfth century. From then until now the Powers have spread their wings and encompassed all walks of society. In modern politics the Irish American academic and author, [Samantha Power](#) is a diplomat who served as the 28<sup>th</sup> U.S. Ambassador to the United Nations from 2013 to 2017. In recent times [David Francis Power](#), who was born in 1912 and died in 1998, served as a special assistant to John F. Kennedy when he was president. Indeed Dave, as he was known, was in the Dallas motorcade when the president was assassinated. He was also the first curator of the Kennedy Library and Museum serving from 1964 to 1994.

In recent decades genealogy has expanded from tracing family roots into a major tourism interest. The current television programme, *“Who Do You Think You Are?”* is a great example of the current fascination with researching family trees and tracing familial roots. The diaspora worldwide is now an important part of the Irish global family. It provides Ireland with business, political, educational and cultural influence on the global stage.

The value in organising these events cannot be overstated in terms of Irish heritage, culture, tourism, education and economics and in the context of Ireland’s Ancient East tourism brand.

*Every man is a quotation from all his ancestors. - Ralph Emerson*





[Gathering Powers](#) is a social enterprise located in Dunhill that promotes and organises Power Clan gatherings involving Powers worldwide. The latest four-day event was a special package offered to Powers worldwide. Over 60 Powers from the US, UK, Canada and Germany included it in larger holiday packages to Ireland.

On Saturday the 10<sup>th</sup> of August the party visited Dunhill Village. After a walk through the Anne Valley the group arrived at Dunhill Castle. A lone piper greeted them at the gates. The party was escorted by members of the [Deise Medieval Re-enactment Group](#). Local historian, Tony Hennessy gave a talk on the history of the Powers and the castle. Marie Power, [The Sea Gardener](#) who specialises in seaweed dishes hosted a cooking demonstration within the castle's ruins. Following the re-enactment which had actors in medieval clothing and weaponry engaging with the party, the group retired to Harney's Pub in Dunhill Village for a barbeque with some fine local musicians and the day was enjoyed by all.

Some families in the party have been to Waterford and Dunhill several times and have a strong affinity with the area and their Power connection. Tom Power from California a former Democratic politician and close to the Leader of the House, Nancy Pelosi in the US Congress, is using his contacts to promote the clan. He is committed to having Nancy Pelosi use her influence on the afore mentioned Samantha Power to take up an invitation from the Waterford Committee to become the honorary Chief of the Power Clan for a period of three years. Dan Power, retired professor of Des Moines University, Iowa, travelled with his family including his son who has two book shops in New York and who has declared an interest in joining the Waterford committee in organising the Powers in the US for the next overseas tour.

At the July launch of the Social Enterprise Policy for Ireland, Minister Michael Ring, TD, (Minister for Rural and Community Development), said it would ***“enable social enterprise to grow in scale, support jobs, and make a positive impact on individuals and communities in rural and urban areas”***. In the Dunhill, Copper Coast Geopark, social enterprise is making a lasting impression and made it possible to organise the trips which began in 1994. There was also The Gathering 2013, followed by 2016 and 2019. Over 100 people attended the government sponsored and promoted 2013 event. The 60 people involved in 2019 declared themselves enthralled with the experience and are committed to bringing others with them in the future.

On day two the visit was hosted by the Copper Coast and Dungarvan. The group enjoyed a brief talk and visited Kilmacthomas workhouse. In Dungarvan they visited the castle and the [First World War memorial](#). Following lunch in Merrys Pub the group set off again by the Coast Road through the Copper Coast Geopark back to Waterford stopping at Kilmurrin Cove. The trip, which is spectacular, prompted Bryan Powers from Texas to comment how ***“amazing it was to have the ocean right here on your doorstep”***. The group also visited the Geopark's centre in Bunmahon, and the day ended with music and refreshments in Mother McHugh's of Fenor.

On the third day the group visited [Curraghmore House](#) for a private tour. Catherine Power, (1701 – 1769), inherited the Curraghmore estates when she was two years old following the death of her father. In 1717 she married Sir. Marcus Beresford on the grounds of Curraghmore thus uniting two of Ireland's most prominent families.

Conan Power, the Waterford Group organiser, gave his thanks to Lord Waterford and his staff mentioning especially Alan, the estate manager, for his input. That evening the group visited the Granary on Waterford city quays where a gala meal was hosted in the company of the Mayor of Waterford Metropolitan area. The guests were entertained by some fine local musicians and the evening was enjoyed by all.

The following morning, Tuesday, the group made their way to New Ross to visit the Dunbrody Famine Ship to see how their ancestors might have travelled to the New World.

On Wednesday the remaining members of the party returned home overjoyed and impressed with the holiday experience in what they referred to as 'The Old Country'.

*I just want to thank the entire team of organisers. I could never have imagined the depth of experience we have had and how it has affected me has surprised me. Thank you all so much. ~ Galen Brandt, New Jersey*



## Copper Coast Geopark Audit, Dunhill Co. Waterford

An audit by international auditors is carried out every four years on the UNESCO accredited [Copper Coast Global Geopark](#). The most recent audit was completed in July 2019.



DFBA Project Leaders provide progress updates to visiting auditors as part of Copper Coast Geopark accreditation process



Senan Cooke presenting Hannah Jin Fang (China) and Jaoh Carles (Portugal) with a copy of the Enterprising Community.

## Upcoming Awards

- ❖ [The Charity Impact Social Enterprise Award](#) entries close on 2<sup>nd</sup> October. All eligible nominations will be showcased on Charity Impact website and social media from 2 September. Social enterprises are social-mission focused organisations that engage in trading activity in a way to achieve their social mission, or to generate a contribution to the cost of delivering their mission.
- ❖ [Volunteer Ireland Award](#) is now open for nominations. Enter your neighbour, family, friend, colleagues or community supporters for a chance to win. The awards present the perfect opportunity to show volunteers how much their dedication means to their communities and the causes they support. 2018 overall Volunteer of the Year was Mary Fitzgerald, check out last years' [short list](#) of amazing people.

**Keep in Touch!**

